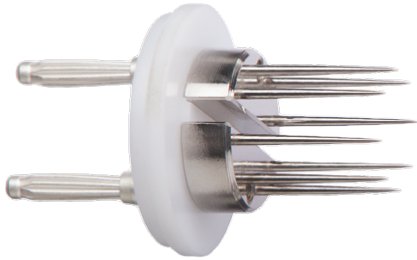


# Aqua-Boy: Needle Electrodes



This 1" needle electrode is designed to measure textiles in the form of cop, bobbins or skeins.

## Technical Data

**Needle length:** 1"

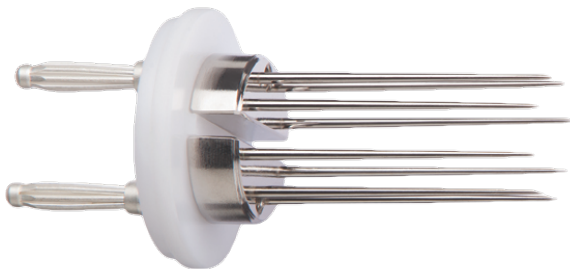
**Weight:** 1<sup>1/2</sup> oz

**Designed for:** TEMI, BSMI Aqua-Boy

**N.B.** This electrode requires a universal cable and a universal electrode holder to attach to the Aqua-Boy meter and will not function on its own.

## Ordering Data

205



This 1<sup>3/4</sup>" needle electrode is designed to measure textiles in the form of cop, bobbins or skeins.

## Technical Data

**Needle length:** 1<sup>3/4</sup>"

**Weight:** 1<sup>1/2</sup> oz

**Designed for:** TEMI, BSMI Aqua-Boy

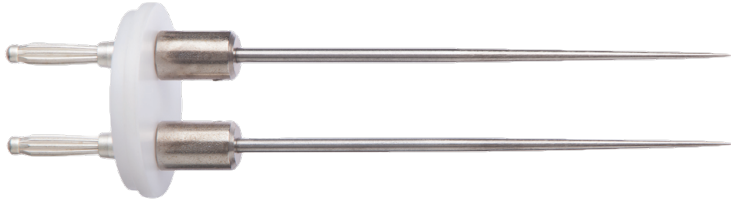
**N.B.** This electrode requires a universal cable and a universal electrode holder to attach to the Aqua-Boy meter and will not function on its own.

**ENERCOP** instruments ltd

25 Shorncliffe Road, Toronto, ON, M9B3S4, Canada  
Tel: 416-231-5335, Toll free: 1-800-363-7267

Ordering Data

206



This 4" needle electrode is designed to measure textiles in the form of cop, bobbins or skeins.

Technical Data

**Needle length:** 4"

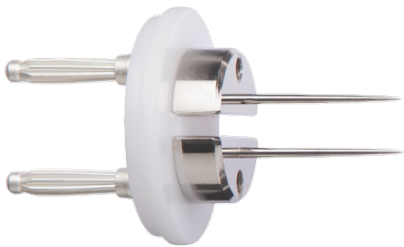
**Weight:** 1<sup>1/2</sup> oz

**Designed for:** DBMI, TEMI, BSMI, SLI, KOMI, KOMII, KOMIV, JFMI, STI Aqua-Boy

**N.B.** This electrode requires a universal cable and a universal electrode holder to attach to the Aqua-Boy meter and will not function on its own.

Ordering Data

207



This 1" needle electrode is designed specifically for cork stoppers only.

Technical Data

**Needle length:** 1"

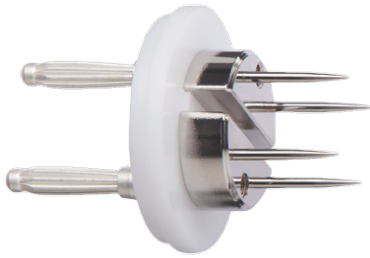
**Weight:** 1<sup>1/2</sup> oz

**Designed for:** TFRI, KOMI, KOMII, KOMIV Aqua-Boy

**N.B.** This electrode requires a universal cable and a universal electrode holder to attach to the Aqua-Boy meter and will not function on its own.

Ordering Data

207 a



This 3/8" needle electrode is designed for depth measurements of painted wood, furniture, plaster walls, wood and cement.

Technical Data

**Needle length:** 3/8"

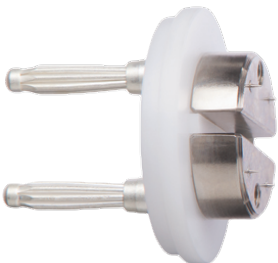
**Weight:** 1<sup>1/2</sup> oz

**Designed for:** HMI, HMII, HMIII, HMIV, BMI, DBMI, PMI, PMII, ZPI, ZPIII, LMI, LMIII, KOMII, KOMIV, SPI Aqua-Boy

**N.B.** This electrode requires a universal cable and a universal electrode holder to attach to the Aqua-Boy meter and will not function on its own.

Ordering Data

208



This 0.06" needle electrode is specifically designed for the measurement of veneers and cardboard.

Technical Data

**Needle length:** 0.06"

**Weight:** 1<sup>1/2</sup> oz

**Designed for:** HMIV Aqua-Boy

**N.B.** This electrode requires a universal cable and a universal electrode holder to attach to the Aqua-Boy meter and will not function on its own.

Ordering Data

208 a